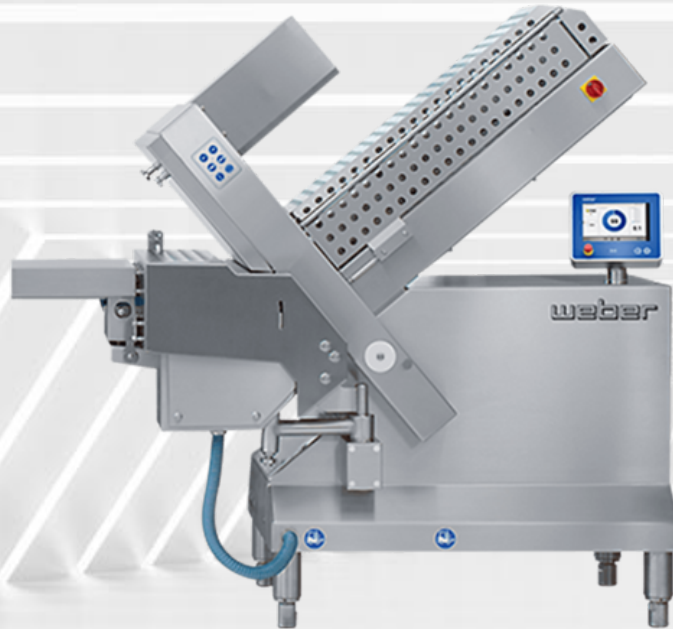


Slicer 305




Product details


Select one of the variants to display the full potential of the Weber Slicer 305.


[View online](#)



Advantages

 Circular blade

 Weber Hygiene Design

 Quick set-up time

 Interleaver

 Manual loading

Slicer 305

The Weber Slicer 305 is the entry-level model for high-tech slicing technology. It is easy to operate, it is simple to change products, and both slicing edge and slicing stop can be adjusted to the product width. The Weber hygienic design ensures that the system is easy to clean.

NEW:

wePACK 7000 - Optimized software for the integration of infeeding systems

SmartLoader - New optimized software and improved synchronization to the packaging machine

Presentation



Stacked



Staggered Stack



stacked-with-interleave



Shingled-stack



Shingled



Shingled-with-interleave



Multi-shingled



Endless-shingled



Pieces



Shaved



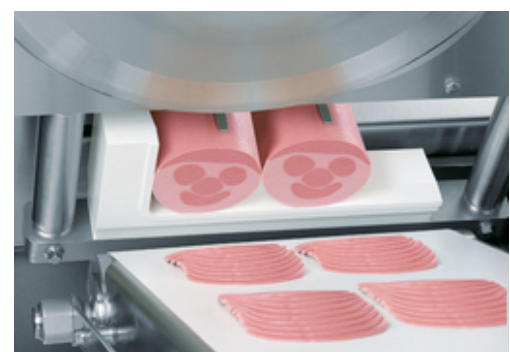
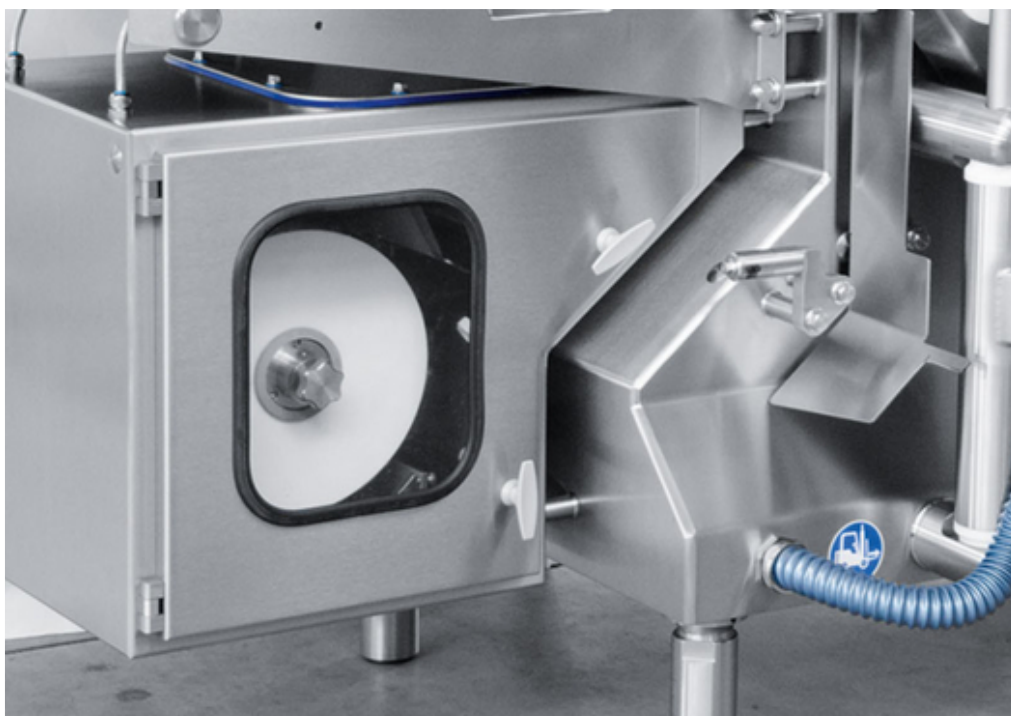
Folded



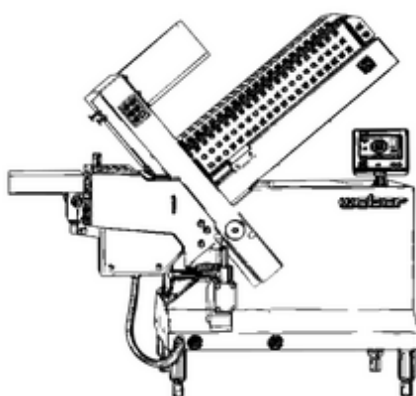
Overlapped -
single/mixed



Multiple-overlaps -
single/mixed



Technical Data Slicer 305



Height (mm)	2065
Width (mm)	960
Length (mm)	2353
Weight (kg)	990
Slicing speed (rpm)	max. 400
Product throat height (mm)	125/135/150
Product throat width (mm)	250
Product length (mm)	1000
Slicing system	Circular blade
Slicing thickness (mm)	0.5-50
Loading (automatic/manual)	manually

This document was generated automatically on 03/30/2023. All information is non-binding. We reserve the right to make changes in the interest of technical progress. For the latest information on this product, please visit:

<https://www.weberweb.com/portfolio/slicer/slicer-305/>

Weber means: service across the board.



Weber Academy.

Maximize line performance through professional training courses.

At the Weber Headquarter in Breidenbach, Germany, we have our own training center, the Weber Academy. Being a provider of complete line solutions, we offer training courses for your Weber Line, tailored precisely to your needs. In doing so, our focus is always on increasing efficiency and optimizing profit in your company.



Weber Guardian.

A safe plan for your production.

Only those who listen can understand. And those who understand can act. With our Weber Guardian program, we harmonize people, machines, and processes to get the most out of production. From preventive maintenance and inspection through targeted personnel development to production support and optimization.



Weber Portal.

Networked thinking, handling together.

You will find everything about your Weber equipment bundled in your personal Weber Portal. Compact, individual and interactive. From your customer profile and that of your machines to e-learning on your setup as well as convenient spare parts ordering and service offers. Are you already registered?